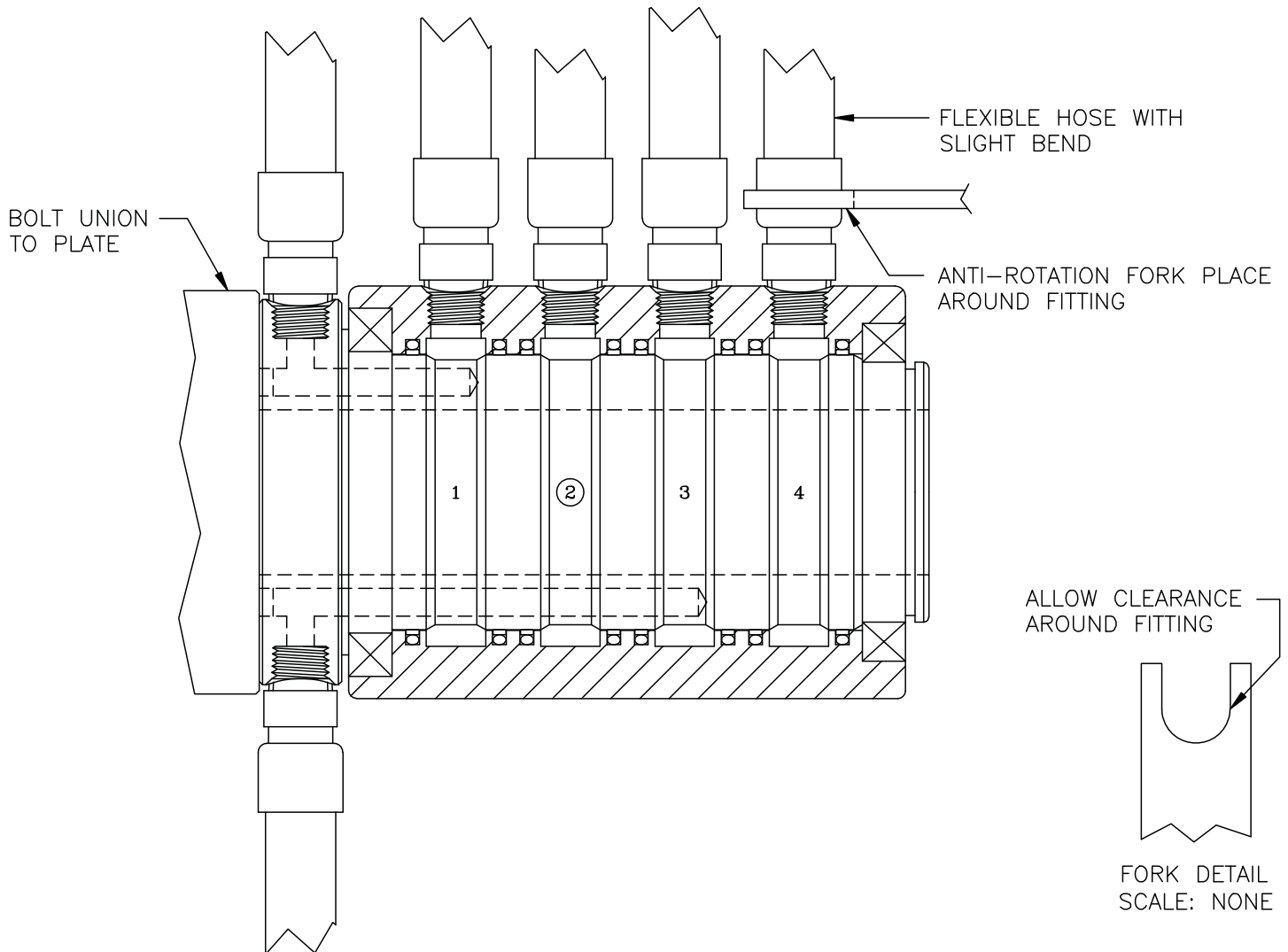


## INSTALLATION GUIDE - SERIES 011



### PROPER USE AND MOUNTING INSTRUCTIONS

1. Connect all fittings to housing prior to installation.
  - Do not use rigid piping as this will compromise the life of the union.
  - The hose should be flexible and have a slight bend.
    - Extreme bends can reduce the flexibility of the hose.
  - The rubber hose selected should be able to safely handle the working pressure.
  - The hose should be properly supported & should not side load the union.
2. The use of anti-rotation fork is recommended to prevent the housing from rotating.
  - The fork should be placed around one of the housing fittings and allow the union to find its center.
3. Fasten the rotary union to the machine.



**ROTARY**  
SYSTEMS INC